

# River Basin Management plans in Finland

- implementation of Water Framework Directive

Lotta Nummelin  
Environmental Policy Officer  
Finnish Society for Nature and Environment

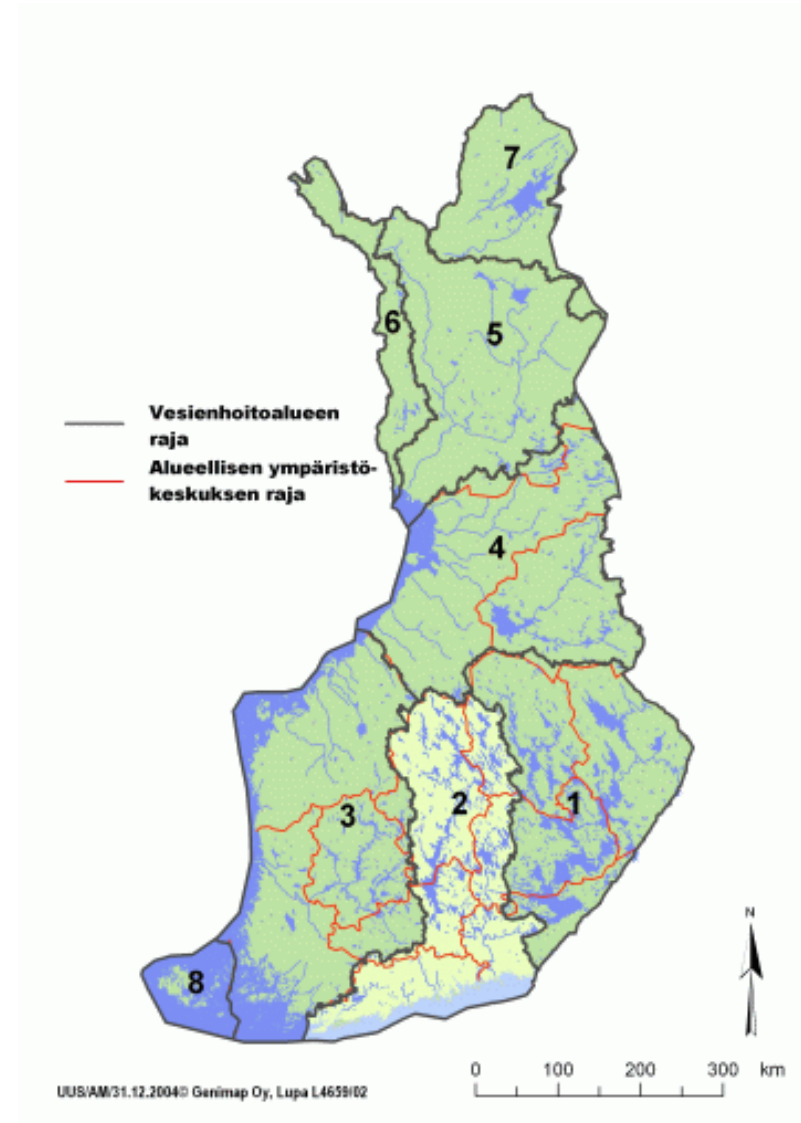


**NATUR  
MILJÖ**  
Riksorganisation  
för miljövard








# River Basins

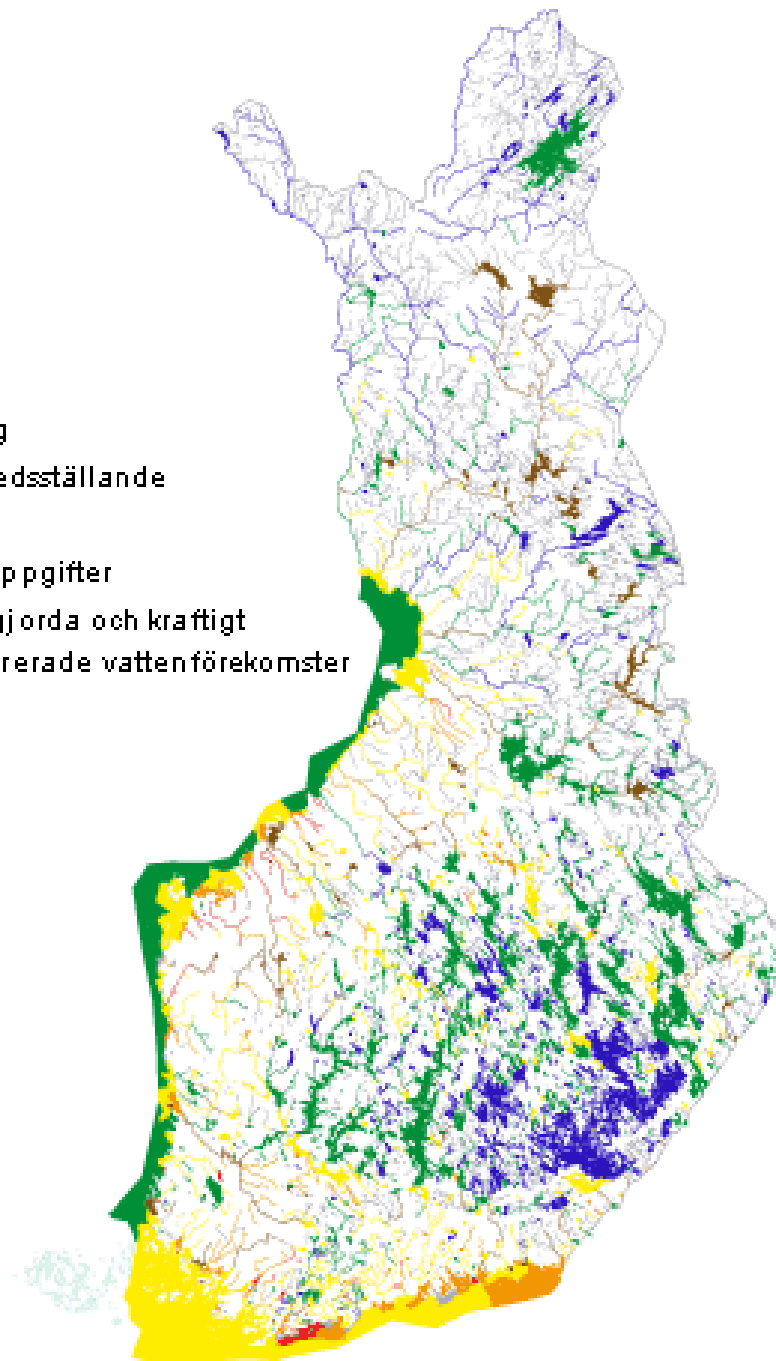
- the Finnish division

1. Vuoksens vattenförvaltningsområde
2. Kymmene älv-Finska vikens vattenförvaltningsområde
3. Kumo älv- Skärgårdshavets- Bottenhavets vattenförvaltningsområde
4. Ule älv-Ijo älv vattenförvaltningsområde
5. Kemi älv vattenförvaltningsområde
6. Torne älv avrinningsområde (tillsammans med Sverige)
7. Tana älv, Näätämöjokis och Pasvig älv avrinningsområden (tillsammans med Norge)
8. Åland

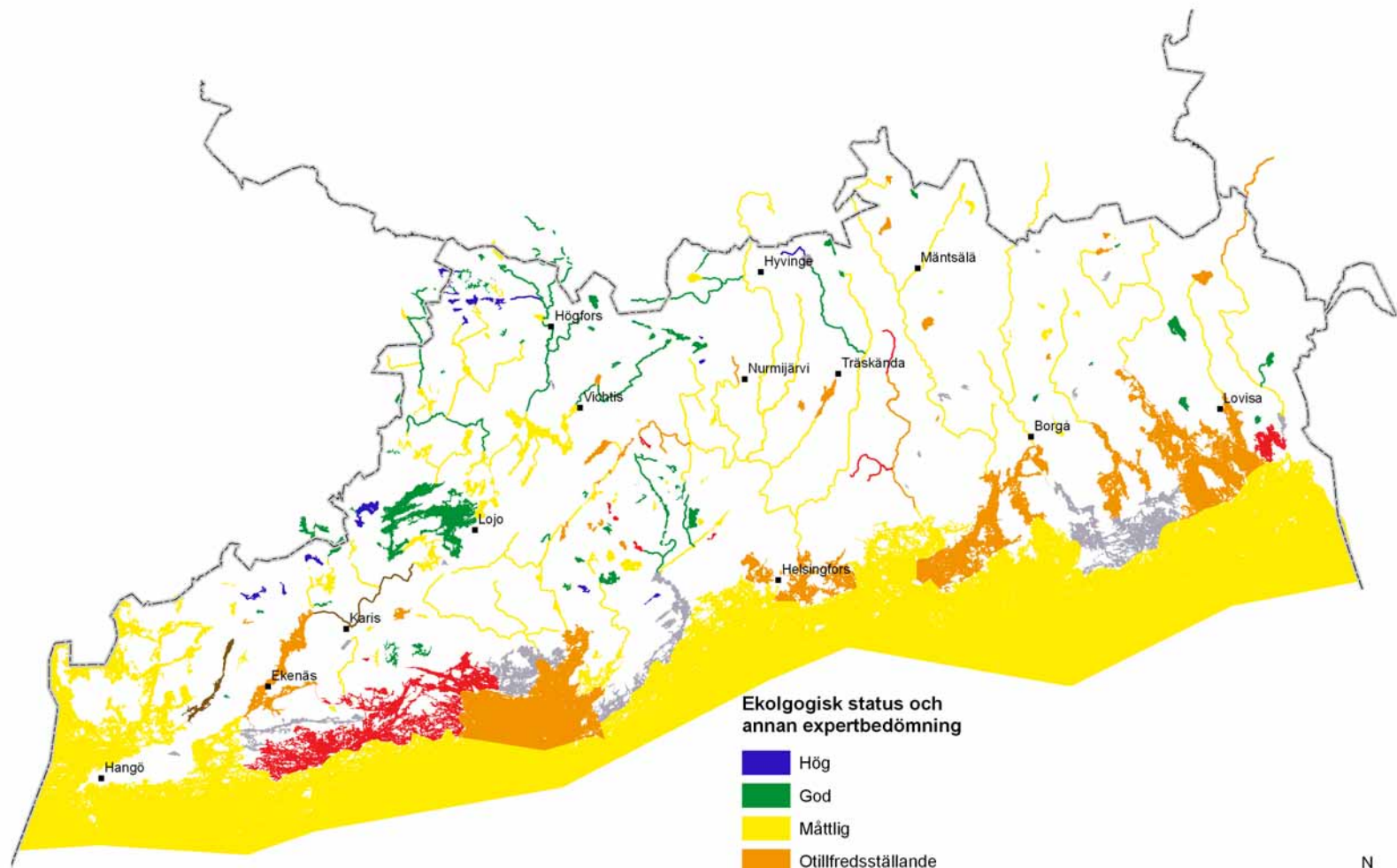


# Classification

-  Hög
-  God
-  Måttlig
-  Otillfredsställande
-  Dålig
-  Inga uppgifter
-  Konstgjorda och kraftigt modifierade vattenförekomster



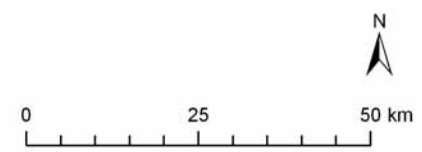
NATUR  
MILJÖ  
Riksorganisation  
för miljövard



**Ekologisk status och annan expertbedömning**

- Hög
- God
- Måttlig
- Otillfredsställande
- Dålig
- Uppgifter saknas
- Kraftigt modifierade vatten

© Nylands miljöcentral  
strandlinjematerialet © Lantmäteriverkets tillstånd nr 7/MML/08



# Waters included in the plan

- rivers with catchment area larger than 200 km<sup>2</sup>
- lakes larger than 5 km<sup>2</sup>
- all coastal areas
- special areas: drinking water reservoirs, beaches and lakes for swimming and Natura 2000 areas
- smaller water bodies are grouped (?)



# Problems – summary from comments given by FSNE and FANP

- Data lacking
- No money for extended monitoring and actions
- The financial analysis poor
- Relation to other legislation
- Stretching the timetables to the next planning cycles
- Climate change not considered

## Pros

- Good interactions in the stakeholder groups
  - Recognition of the importance of spatial planning in water protection
-

# Public participation

Hearings:

- Work program and time table – end of 2006
- Significant water management issues – end of 2007
- Proposal for River Basin Management Plans – 31 Oct 2008-30 April 2009

Regional stakeholder groups (FSNE and FANP have been involved)

Public information meetings etc but little attentions in the media

FSNE and FANP have supported our local groups (guide book, meetings...)



# Materials available to the hearing

## River basin managements plans

- By the regional Environmental Centers in co-operation with the stakeholder groups
- The specific action plans (?) as attachments and summary in the river basin management plans
- Further information (such as monitoring data, data used for classification) in the public part of the database for the authority



# What happens next

- the comments will be considered
- government will adopt the plans in the end of 2009
- Finland will rapport to EU
- The plan will be implemented...?