



Salmon monitoring in Latvia

J.Birzaks, LFRA

Salmon monitoring

- Financed from Fund of Env 24000 EUR as 2 separate projects (river fish and Natura 2000) , no long- term strategy in country level;
- Monitoring team- 3 persons for field job, 2 in laboratory;
- ~50 stations in salmon rivers, all together 112 in country territory;
- 136 hours of electrofishing, total area 3 ha
- All together in 2008 35 fish, 2 lamprey and 4 crayfish species:
 - 1 invasive fish species, 2 crayfish species;
 - 1 sea species;
 - migratory fish- salmon, sea trout, eel, river lamprey

Monitoring methods

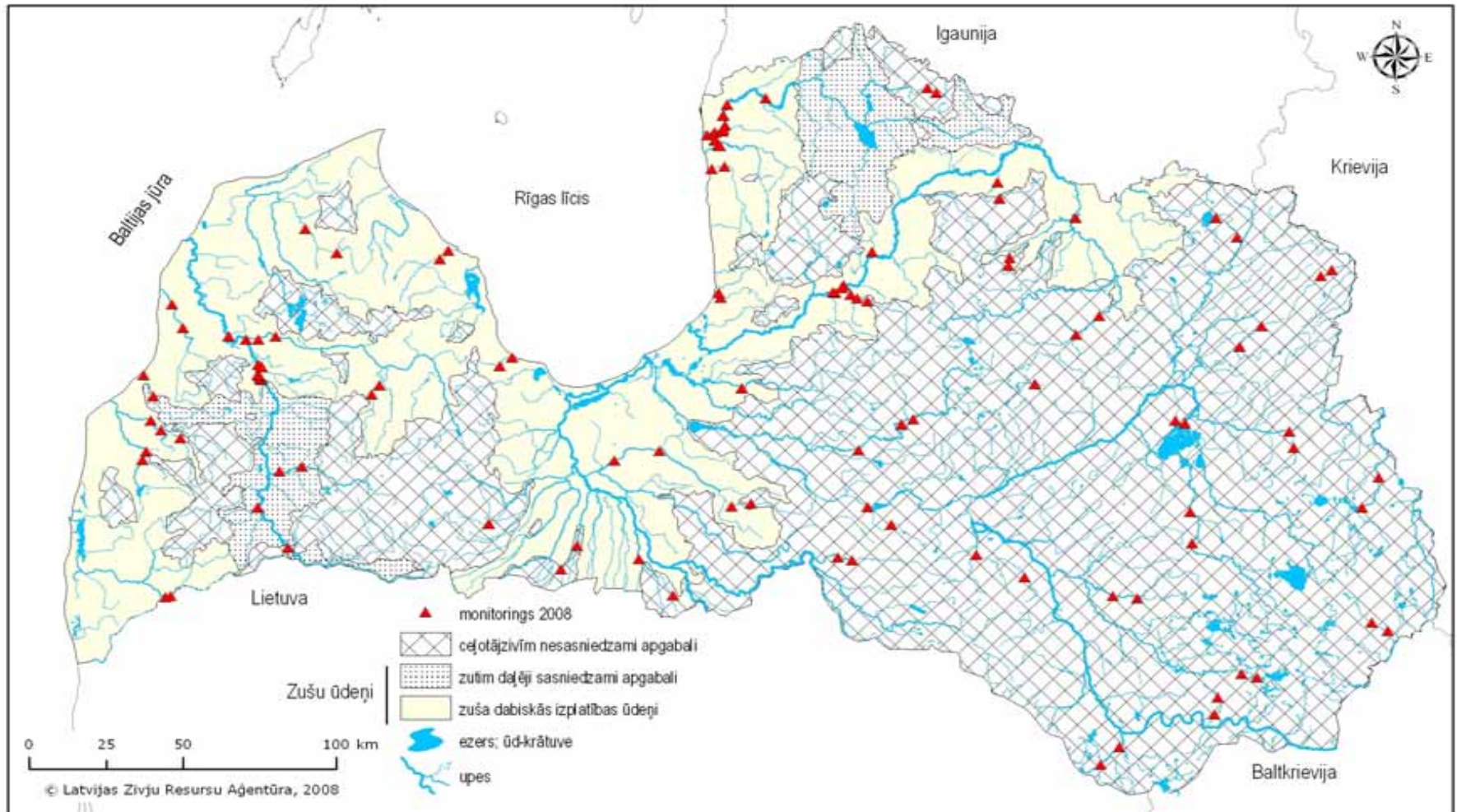
- Parr electrofishing by 3 removals



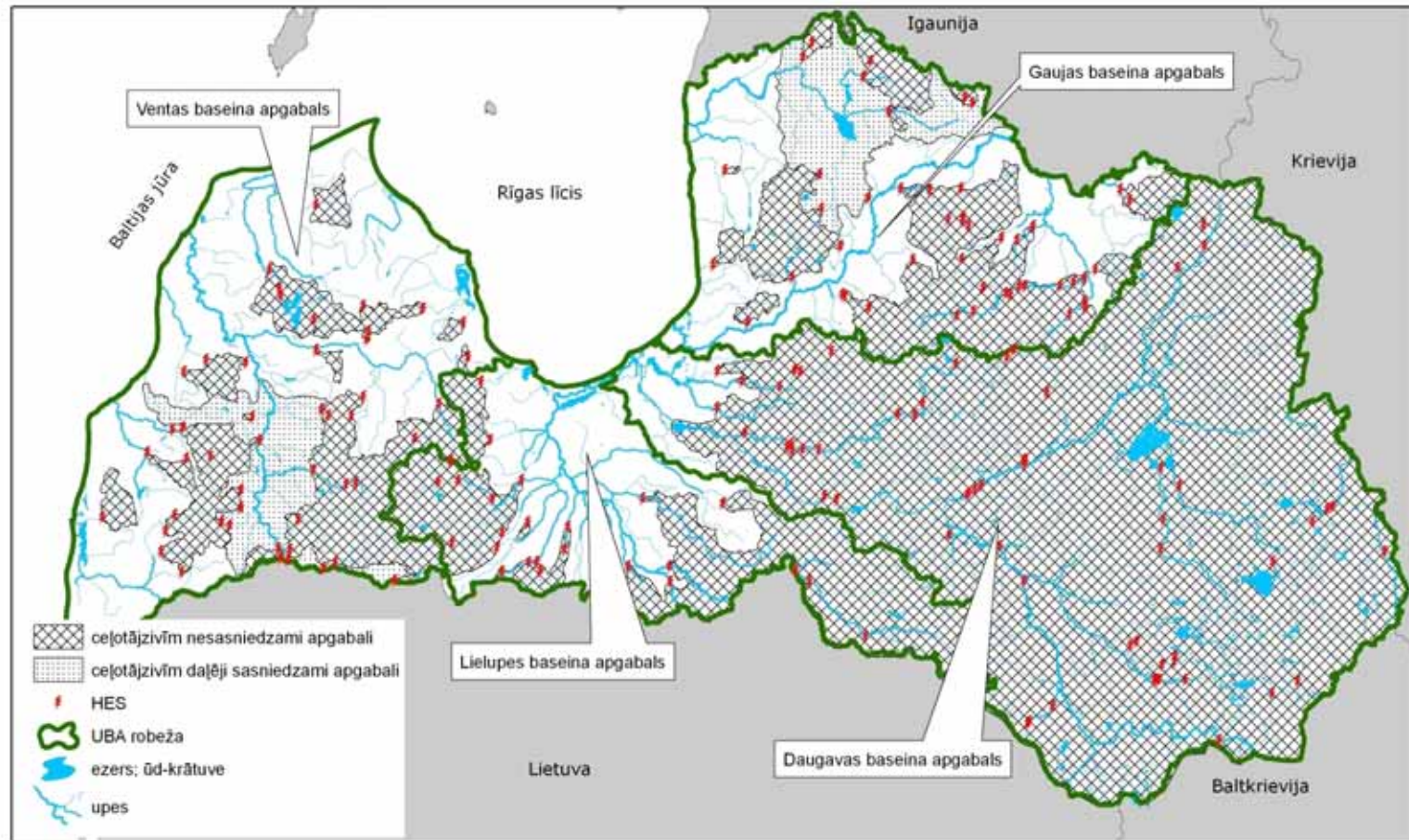
- Smolt trapping in the river Salaca



Monitoring network, 2008

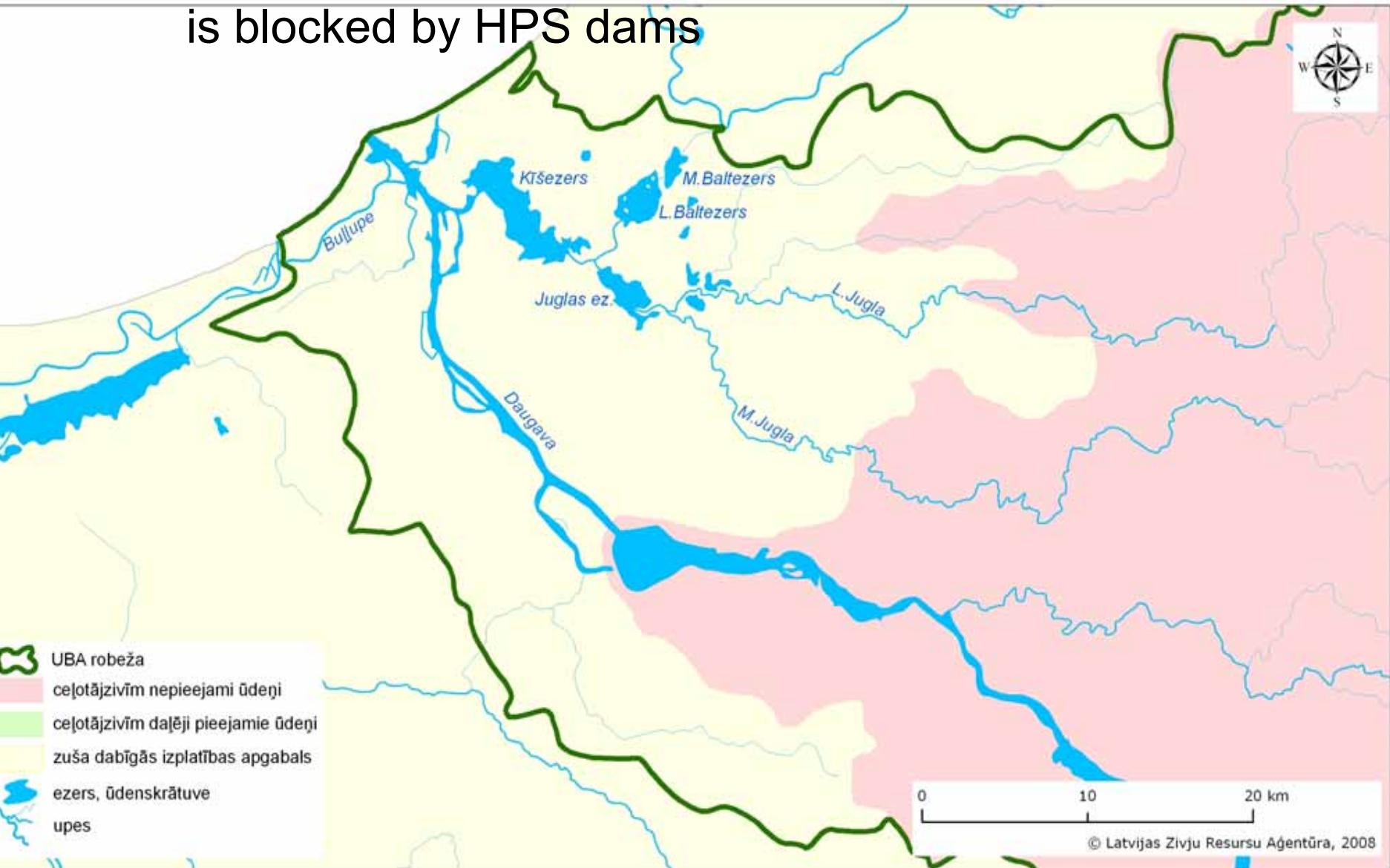


Accessibility of rivers for migratory fish species



Only 40% of country territory or about 14% of inland waters are accessible for migratory fish species

Example of degraded river basin- 90% of catchment is blocked by HPS dams

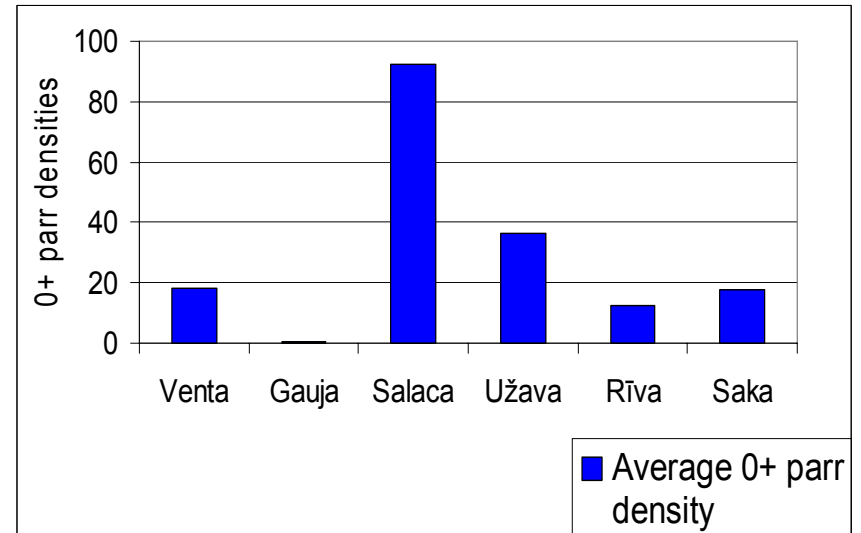


Salmon rivers of Latvia

- In scale of Europe- small rivers with limited potential;
- All together only about 100- 120 ha of habitat suitable for salmon in 10 rivers, no data on total salmon reproduction habitat area in LV rivers;
- Sufficient water quality- eutrofication problems, no acidification, no hazardous waste;
- Warmwater rivers with high potential salmon production levels (about 100 parr/100m²);
- Potential salmon smolt production about 100 thousands;
- Largest old salmon river Daugava blocked by dam (all together 3 dams in these river) without any possibility of wild salmon population restoration;

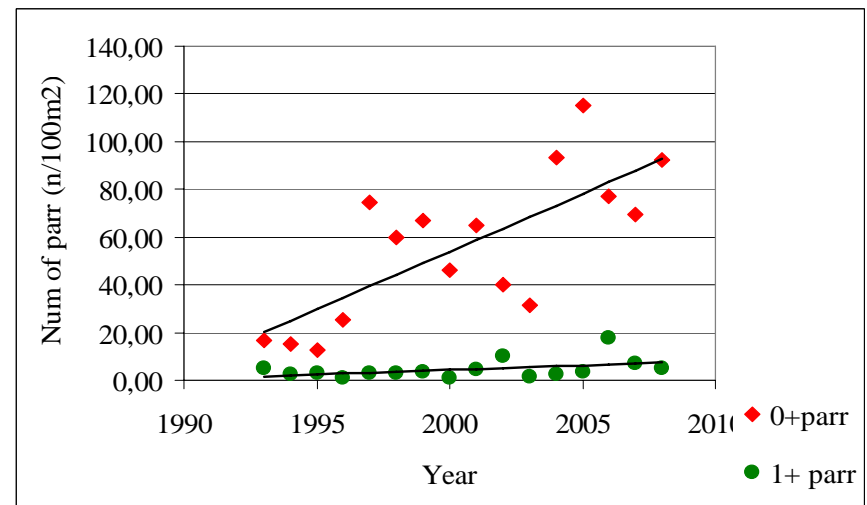
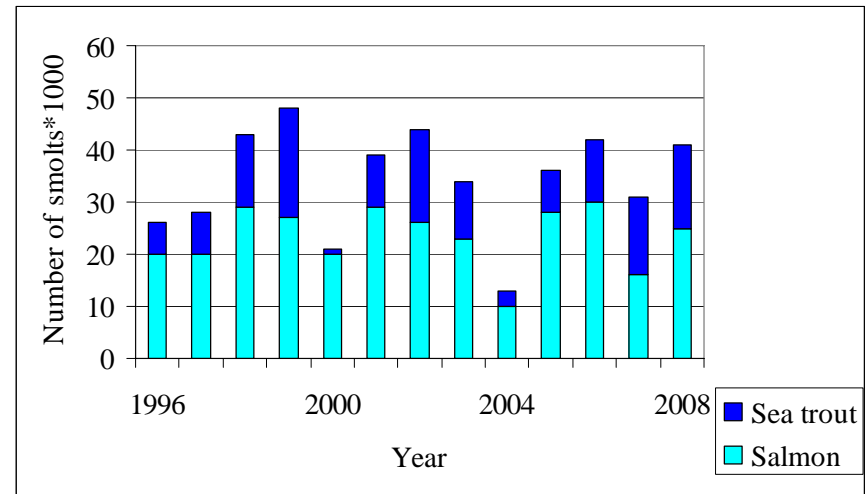
Salmon monitoring results in 2008

- Salmon parr were found in 34 sites, 2 RBD's, 6 river basins and 10 rivers;
- All together 2477 parr were caught, the average density of young salmon was 41.3 ind./100m² of habitat within 0-207;



The river Salaca salmon production

- Potential salmon smolt production in the river Salaca- 30 thous./year. In last decade only in 2004 smolt production drop down below the 50% of potential production
- Parr production exceeds 60 ind./100m²- high index for Baltic sea rivers



Looking forward

- It is understood that in new SAP will change:
 - the level of main target from 50 to 75% of potential smolt production, at least for index rivers;
 - requirements to manage the week populations in small rivers;
 - not clear the future of fisheries;
 - links with WFD

Development of separate rivers SAP's?